

Out West Stallion Station

15419

E Rio Verde Drive
Scottsdale, AZ
2018 Taxes– \$5,552.00

THE ADDRESS 15419 E RIO VERDE DRIVE CONSISTS OF THREE PARCELS AND TOTALS 19.46 ACRES

APN #219-37-412 9.54 acres

APN #219-37-413 5.95 acres

APN #219-37-414-C 3.97 acres

-
- 1) A 31,250 square foot covered I-bar steel framed lighted riding arena 125' x 250" built in 2006.
 - 2) A 45,000 square foot lighted outdoor riding arena 150' x 300" with a viewing area including a fire pit and BBQ pit.
 - 3) A ranch manager's home 1,046 square foot site-built home with attached two-car garage built in 1989.
 - 4) A 1,080 square foot doublewide home placed in 2003.
 - 5) A 1,215 square foot doublewide home placed in 2003.
 - 6) A 2,808 square foot barn with three tack rooms with attached 3,900 square foot open-sided stable, built in 1989.
 - 7) A 2,268 square foot barn.
 - 8) A 6,000 square foot open-sided stable built in 2004.
 - 9) A 6,384 square foot open-sided stable built in 2004.
 - 10) A 3,735 square foot open-sided stable built in 1992.
 - 11) A 3,276 square foot open-sided stable built in 1998.
 - 12) A 4,212 square foot open-sided stable with 105 square foot office building and lab, built in 2004
 - 13) A 168 square foot freestanding shelters built in 2005.
 - 14) 10 freestanding shelters of various sizes built in 1992.

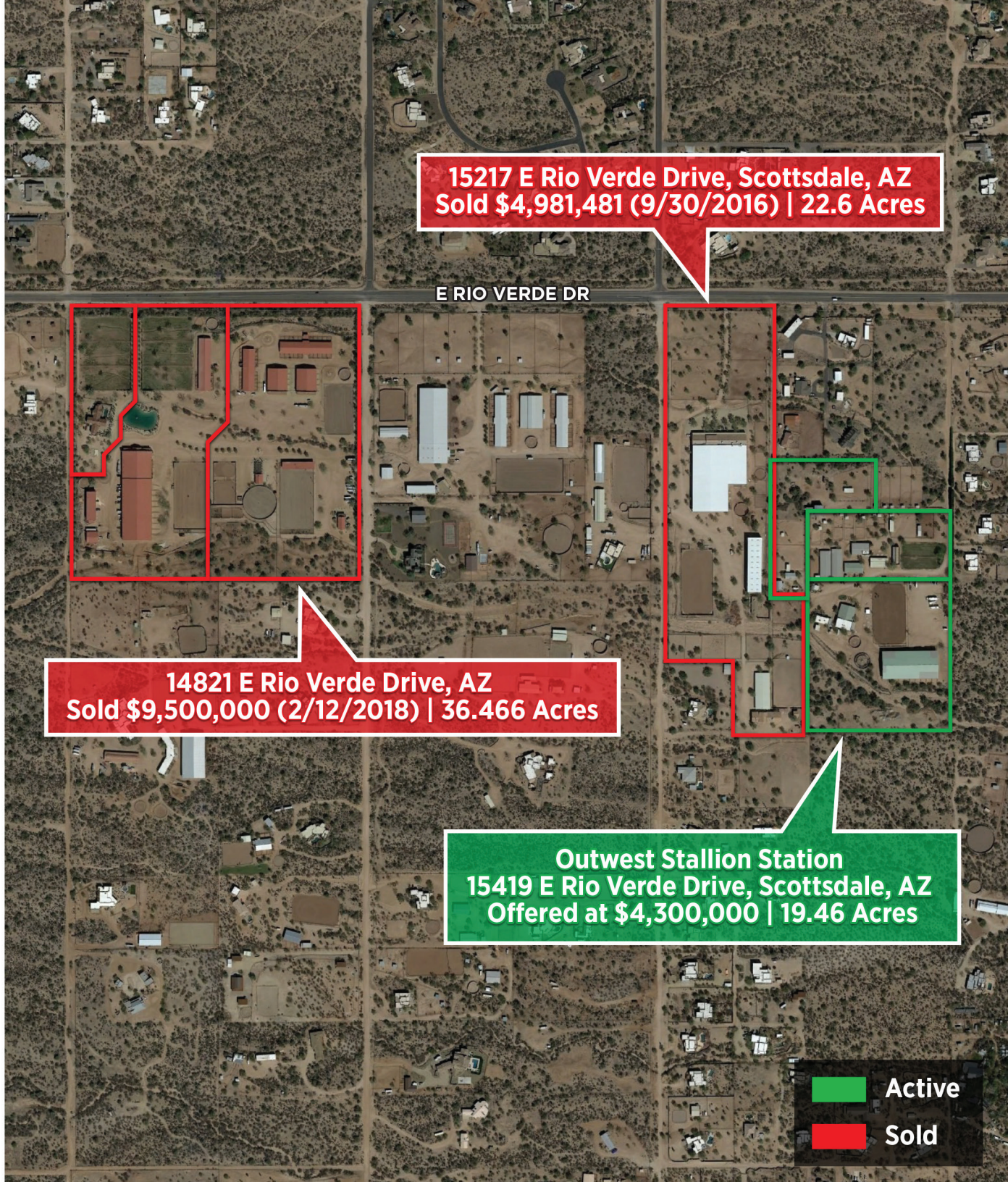
ADDITIONALLY, THE PROPERTY CONTAINS A GATED ENTRANCE, TWO LARGE GRASSY PADDOCKS AND SMALLER PADDOCKS OF VARYING SIZES.

Tricia Cormie: 602 359 6988

tricia.cormie@russlyon.com

Visit website for full property overview

LUXLIVINGAZ.COM



15217 E Rio Verde Drive, Scottsdale, AZ
Sold \$4,981,481 (9/30/2016) | 22.6 Acres

E RIO VERDE DR

14821 E Rio Verde Drive, AZ
Sold \$9,500,000 (2/12/2018) | 36.466 Acres

Outwest Stallion Station
15419 E Rio Verde Drive, Scottsdale, AZ
Offered at \$4,300,000 | 19.46 Acres

Active
Sold